

# Ultra Thin LED Lighting



An environmental and energy efficient solution for interior lighting. Designed to provide base lighting throughout your home and blend in to the ceiling.

## Overview

The Ultra Thin LED lighting has no hotspots, no dots and no lines often associated with other downlights.

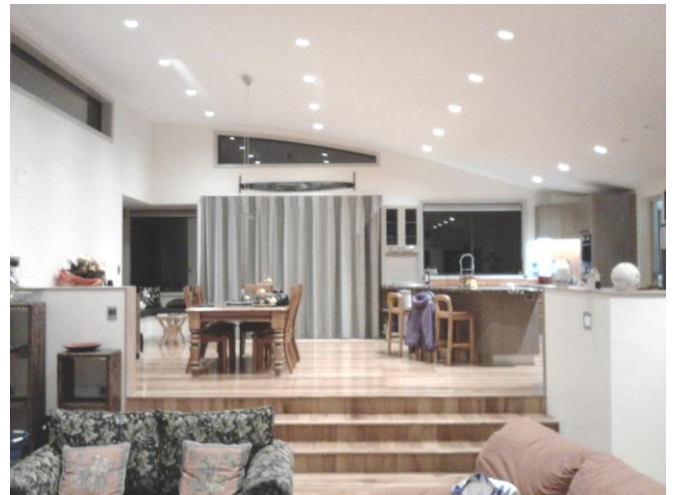
The Ultra Thin LED light distributes light much more efficiently and evenly across the entire face of the light, creating a bright, even homogeneous light that fills the room evenly.

It's 170° wide beam allows light to reflect off walls to create a wider distribution of light from fewer light fittings.

The Ultra Thin LED light has no driver as is powered by an extra low voltage source (24VDC) with simple current limiting that generates minimal heat.

Used with the Ata Touch Device Driver the 10W downlights are 100% dimmable.

No recess is required when you use the magnet bracket fixing, but spring fitting is also available.



Specifications	
Part No.	ATA-L001-000 (10W Wht.) ATA-L001-001 (10W Blk.) ATA-L002-000 (15W Wht.)
Permissible Ambient Temperature	-40°C to 80°C
IP Rating	IP30
EMC Emission	Conforms to EN 55022/CISPR 22
Dimensions	10W - 168mm (Ø), 15W - x 203mm (Ø) x 8mm (D)
Power Supply	24VDC
Dimming	PWM
Wide Beam Angle	170° (Diamond cut prismatic diffuser)
Mounting	Magnet (Surface), Spring (Cutout)
Maximum Temperature	55°C
Colour Rendering Index	75 CRI
Light Temperature	3,500 Kelvin
Current Draw	10W - 0.416 amps @ 24VDC 15W - 0.625 amps @ 24VDC
Light Output	10W - 847 Lumens @ 100% PWM 15W - 1155 Lumens @ 100% PWM
Weight	10W - 0.3kg, 15W - 0.5kg



Ultra Thin



Magnetic Bracket



Ata Touch a division of TCS (NZ) Ltd  
34 The Boulevard, Te Rapa, New Zealand  
PO Box 20489, Hamilton 3241  
+64 7 849 7729  
[sales@atatouch.co.nz](mailto:sales@atatouch.co.nz)  
[www.atatouch.co.nz](http://www.atatouch.co.nz)